

Carnivorous dinocephalian from the Middle Permian of Brazil and tetrapod dispersal in Pangaea

Juan Carlos Cisneros^{a,1}, Fernando Abdala^b, Saniye Atayman-Güven^b, Bruce S. Rubidge^b, A. M. Celâl Şengör^{c,1}, and Cesar L. Schultz^d

^aCentro de Ciências da Natureza, Universidade Federal do Piauí, 64049-550 Teresina, Brazil; ^bBernard Price Institute for Palaeontological Research, University of the Witwatersrand, WITS 2050 Johannesburg, South Africa; ^cAvrasya Yerbilimleri Estitüsü, İstanbul Teknik Üniversitesi, Ayazağa 34469, İstanbul, Turkey; and ^dDepartamento de Paleontologia e Estratigrafia, Universidade Federal do Rio Grande do Sul, 91540-000 Porto Alegre, Brazil

Contributed by A. M. Celâl Şengör, December 5, 2011 (sent for review September 29, 2011)

The medial Permian (~270–260 Ma: Guadalupian) was a time of important tetrapod faunal changes, in particular reflecting a turnover from pelycosaurian- to therapsid-grade synapsids. Until now, most knowledge on tetrapod distribution during the medial Permian has come from fossils found in the South African Karoo and the Russian Platform, whereas other areas of Pangaea are still poorly known. We present evidence for the presence of a terrestrial carnivorous vertebrate from the Middle Permian of South America based on a complete skull. *Pampaphoneus biccai* gen. et sp. nov. was a dinocephalian “mammal-like reptile” member of the Anteosauridae, an early therapsid predator clade known only from the Middle Permian of Russia, Kazakhstan, China, and South Africa. The genus is characterized, among other features, by postorbital bosses, short, bulbous postcanines, and strongly recurved canines. Phylogenetic analysis indicates that the Brazilian dinocephalian occupies a middle position within the Anteosauridae, reinforcing the model of a global distribution for therapsids as early as the Guadalupian. The close phylogenetic relationship of the Brazilian species to dinocephalians from South Africa and the Russian Platform suggests a closer faunistic relationship between South America and eastern Europe than previously thought, lending support to a Pangaea B-type continental reconstruction.

Gondwana | Therapsida | Paleozoic | paleogeography | migration

Knowledge of the global distribution of medial Permian terrestrial faunas is limited by the paucity of rocks deposited in terrestrial environments at that time, known mainly from the Karoo Basin of southern Africa (1, 2) and the Russian Platform (3, 4). Recent additions to these classic localities are the Chinese Xidagou Formation (Gansu Province) (5) and the Ruhuhu Formation in Tanzania (6). The medial Permian witnessed a critical faunal turnover in the mammalian stem lineage, during which pelycosaur-grade synapsids were almost completely replaced by the more derived therapsids. This greatly modified the trophic web of the terrestrial vertebrates (7). Among the main actors in this ecological change were the dinocephalian therapsids, represented by both medium size-to-large carnivores and large herbivores (8, 9). Anteosaurids were the carnivore lineage within Dinocephalia, including the South African *Anteosaurus magnificus* and the Russian *Titanophoneus potens*, which were the largest (~6 m long) terrestrial predators of the Permian. This group is well-represented in both South African and Russian strata, and has recently been found in north China as well (5).

The Rio do Rasto Formation of the Paraná Basin in southern Brazil is the only South American Permian stratigraphic unit known to preserve terrestrial fossil faunas (10, 11) that indicate a close link with the Permian Karoo faunas (2, 12–15). Although this formation was originally considered late Permian, based on the record of the dicynodont *Endothiodon* and the alleged presence of the parareptile *Pareiasaurus*, new fossil evidence (16, 17) indicates a medial Permian (Guadalupian) age for at least part of this stratigraphic unit. Some of these new fossils enabled the recognition of dinocephalians from South America (16), although the remains were too

fragmentary to further explore their affinities with confidence. Here we present a diagnosable dinocephalian species from the Permian of South America, based on a complete and well-preserved cranium. This fossil is a member of the carnivorous clade Anteosauridae, and provides evidence for Pangaea-wide distribution of carnivorous dinocephalians during the Guadalupian.

Results

Systematic Paleontology. Synapsida Osborn, 1903; Therapsida Broom, 1905; Dinocephalia Seeley, 1894; Anteosauridae Boonstra, 1954; Syodontinae Ivakhnenko, 1994; *Pampaphoneus biccai* gen. et sp. nov.

Etymology. The generic name is derived from the *pampas*, the flatlands characteristic of southern South America, where the taxon was found, and the Greek *phoneus*, meaning “killer,” a reference to predatory habits. The specific epithet is an homage to José Biccai, landowner of the farm where the fossil was found.

Holotype. UFRGS (Universidade Federal do Rio Grande do Sul) PV386P, an almost complete skull and lower jaw (Fig. 1).

Locality and Horizon. Collected on the farm Boqueirão (S 30 00' 08"; W 54 05' 09"), Catuçaba District, São Gabriel Municipality, Rio Grande do Sul State, Brazil. The exposure refers to the Morro Pelado Member of the Rio do Rasto Formation, of Guadalupian age (17).

Diagnosis. The taxon is a medium-sized anteosaurid with a moderately pachyostosed skull that can be distinguished from other anteosaurids by a premaxilla that bears only four teeth, a squamosal jugal process that surpasses the anteriormost margin of the temporal fenestra, and the presence of a shallow, elliptical, angular boss. *P. biccai* can further be distinguished from all anteosaurids except *Syodon biarmicum* by the presence of at least eight short, bulbous postcanines bearing fore and aft serrations. It can be distinguished from *S. biarmicum* by its larger size, more robust snout, thickened postorbital that forms an orbital boss, and well-developed crests that extend from the pineal boss to the orbital rim.

Description and Comparisons. For the sake of brevity, the description is restricted to characteristics of phylogenetic significance. A comprehensive description is in progress and will be provided elsewhere. *P. biccai* is a medium-sized anteosaurid; its

Author contributions: J.C.C. designed research; J.C.C., F.A., S.A.-G., and A.M.C.Ş. performed research; C.L.S. contributed new reagents/analytic tools; J.C.C., F.A., and S.A.-G. analyzed data; and J.C.C., F.A., B.S.R., and A.M.C.Ş. wrote the paper.

The authors declare no conflict of interest.

¹To whom correspondence may be addressed. E-mail: juan.cisneros@ufpi.edu.br or sengor@itu.edu.tr.

This article contains supporting information online at www.pnas.org/lookup/suppl/doi:10.1073/pnas.1115975109/-DCSupplemental.

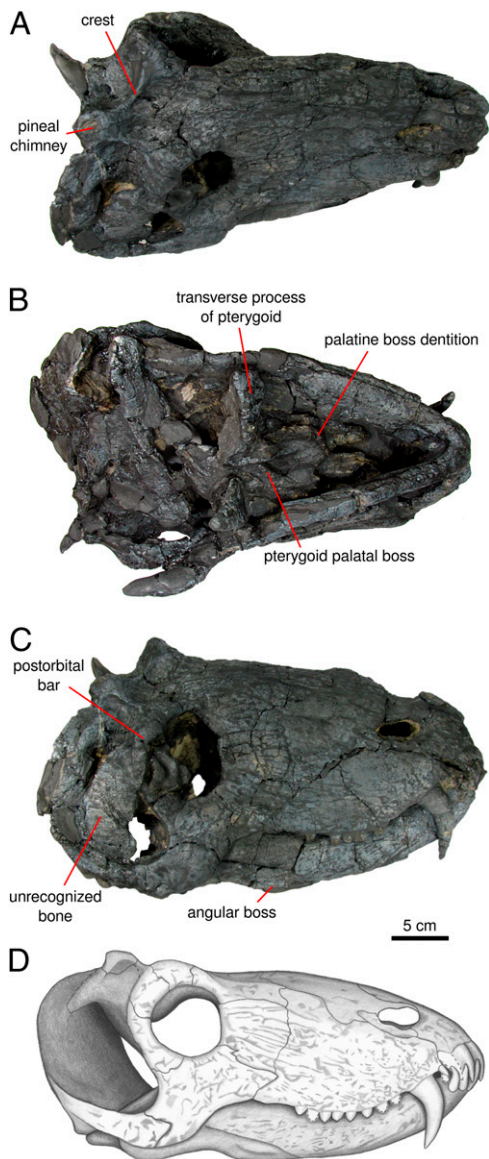


Fig. 1. *P. biccai* from the Middle Permian of Brazil. Photographs of the cranium UFRGS PV386P (holotype) in (A) dorsal, (B) ventral, and (C) lateral view. Reconstruction (D) of holotype in lateral view.

cranium measures ~320 mm, a skull size that is shorter than all anteosaurines and larger than all syodontines but similar to that of the basal anteosaurid *Archaeosyodon praeventor* from Russia. The roof of the cranium is slightly pachyostosed and the snout features ornamentation in the form of longitudinal ridges that radiate from the orbital rim to the lacrimal and the maxilla. The premaxillary alveolar margin is raised in a typical anteosaurid fashion, and features four incisors that intermesh with those of the mandible, the small fourth incisor apparently being laterally covered by the maxilla. The canine is long (~70 mm) and strongly recurved (72°), as in *A. praeventor* and *S. biarmicum* from Russia. The postcanines are very low and robust, similar to those of *S. biarmicum*, and bear fine serrations. The right maxilla features eight postcanines, and the left maxilla features nine. The skull roof of *P. biccai* has a well-developed medial crest and supraorbital bosses that are remarkably similar to those present in subadult *Titanophoneus potens* (Paleontological Institute, Russian Academy of Sciences, Moscow, 157/1) from Russia. The temporal fenestrae are large as in all syodontines, extending anteroventrally

well below the orbits and dorsally above the orbits, contacting the pineal chimney. The anterodorsal border of the temporal fenestra is limited by a high ridge that connects the pineal chimney with the orbit, similar to that present in *T. potens*. In the palate, numerous teeth are present on the palatine and pterygoid bosses and transverse processes of the pterygoids. The palatine bosses are prominent, being connected along the midline as in the Russian *S. biarmicum* and *Australosyodon nyaphuli* from South Africa. The lower dentition is not as well-preserved as the upper, making it difficult to determine the number of incisors and postcanines. The lower canine is shorter than the upper and occludes mesio-lingually to the latter, fitting into a fossa. Lower postcanines are morphologically similar to the upper ones.

Phylogenetic Relationships. A cladistic analysis was performed to address the affinities of *P. biccai*. The taxon was included in the data matrix for Anteosauridae recently published (18), nine new characters were added to the list, and some character modifications were done, based on personal observation of holotypes and referred specimens (*SI Text*). The analysis was run under TNT (19) using the implicit search algorithm (an exact solution is guaranteed) and collapsing rule 1 (branches with ambiguous support are collapsed).

Only four most parsimonious trees were found (Fig. 2 and Fig. S1), with 84 steps. These trees only differ in the placement of *Microsyodon*, a taxon that is known only on the basis of a single maxilla. In all four trees, the analysis identifies *P. biccai* as the basalmost syodontine, a clade formed by *Notosyodon gusevi* from Kazakhstan, *S. biarmicum* from Russia, and *A. nyaphuli* from South Africa. Nonambiguous synapomorphies supporting this relationship are as follows: [2:1] postcanine basal-apical length × meso-distal length nearly equivalent; [14:1] palatine bosses close or interconnected (but suture still visible); [27:1] frontal contribution to the pineal chimney; and [32:1] jaw adductor musculature attachment on pineal chimney. The Syodontinae are a radiation of medium-sized carnivore dinocephalians with light skulls, in contrast to the Anteosaurinae, which comprise huge carnivorous dinocephalians with heavily constructed, pachyostotic skulls. The Brazilian taxon, which fits between the size ranges of these clades and combines morphological characteristics of both groups, occupies a basal position within the Syodontinae.

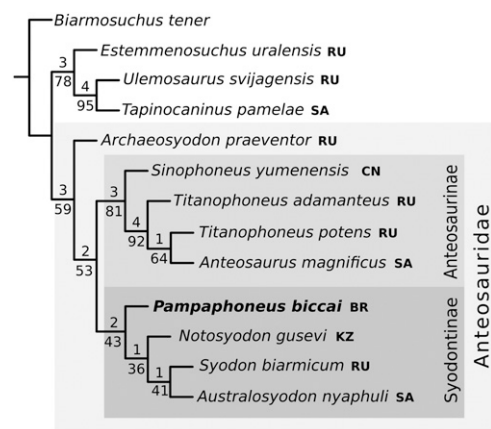


Fig. 2. Strict consensus of anteosaurid relationships, after pruning of *Microsyodon* (see *SI Text* for the four most parsimonious trees including all taxa). BR, Brazil; CN, China; KZ, Kazakhstan; RU, Russia; SA, South Africa. Decay index and symmetric resampling values (above and below, respectively) are provided as measures of support before each node. Decay index calculated from 422 trees. Resampling calculated from 3,000 replicates.

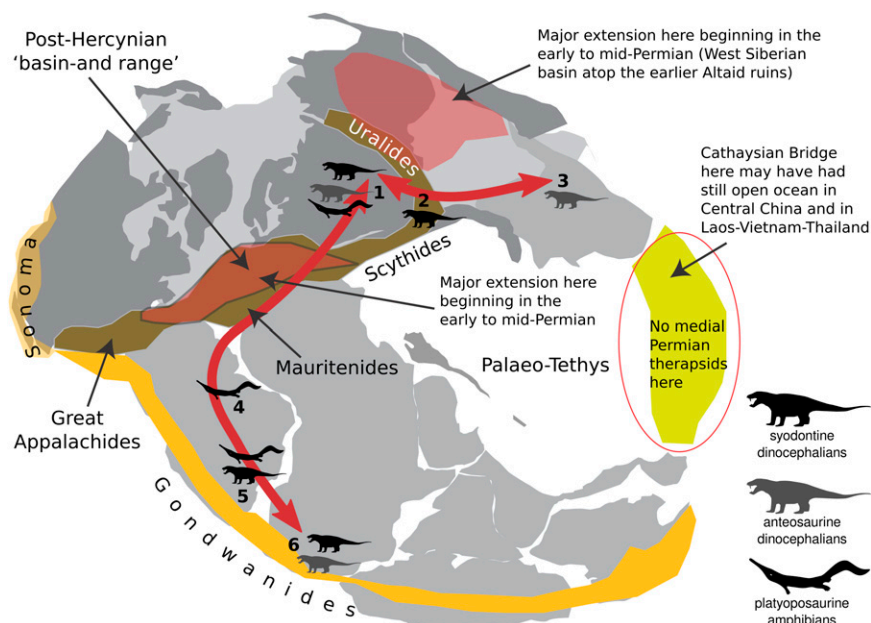


Fig. 3. Reconstruction of Pangaea B showing anteosaurid dinocephalians and platyoposaurid temnospondyles during the Middle Permian. Probable dispersal routes are indicated by red arrows. 1, Russian Platform; 2, southern fore-Urals, Kazakhstan; 3, Ordos Basin, China; 4, Parnaíba Basin, Brazil; 5, Parana Basin, Brazil; 6, Karoo Basin, South Africa. The map is considerably modified from ref. 48 after new geological data.

Discussion

Trans-Pangaean Tetrapods During the Medial Permian. Our study corroborates a previous analysis (18) in placing the Russian *A. praeventor* as the most primitive anteosaurid and the Chinese *Sinophoneus yumenensis* as the basalmost anteosaurine. This evidence, in addition to the basal placement of *Pampaphoneus* among the syodontines, indicates that the Anteosauridae, from its earliest stages of evolution, already had a trans-Pangaean distribution, as the two anteosaurid subclades comprise species from both Laurasia and Gondwana. The Anteosaurinae has members from Russia, China, and South Africa, whereas the Syodontinae has representatives from Russia, Kazakhstan, South Africa, and, now, Brazil (Fig. 3). This cosmopolitan distribution is also reflected in other groups, such as the herbivorous dinocephalians, with forms such as the Russian *Ulemosaurus* being closely related to the South African *Tapinocaninus* (20). Other medial Permian basal therapsids with trans-Pangaean representation are the *Biamrosuchia*, known from Russia and South Africa (5, 21, 22), and the paraphyletic basal anomodonts, with species from Russia (23), China (24), South Africa (25), and Brazil (26).

Apart from therapsids, other Guadalupian tetrapod groups also have trans-Pangaean representatives. Varanopid synapsids originated in the Carboniferous of North America, and are recorded in Russia and South Africa in the medial Permian (27, 28). Nyctoleterids, a group of small parareptiles, are known from the medial Permian of Russia (3) and South Africa (29), and from North America (30) in a horizon that could be either early or medial Permian (31, 32).

Further evidence in support of faunistic proximity between these Pangaean subcontinents is provided by the distribution of platyoposaurine archehosaurids, a group of long-snouted, gharial-like amphibians. Three species are known in Brazil: *Bageherpeton longignathus*, *Australerpeton cosgriffi*, and *Prionosuchus plummeri* (33, 34). The first two are from the Rio do Rasto Formation, in the states of Rio Grande do Sul and Paraná, respectively, whereas the latter is found in the Pedra de Fogo Formation (?Cisuralian/Guadalupian) (35, 36), in the Parnaíba Basin of northern Brazil. Apart from Brazil, platyoposaurines are known only from the Ocher Assemblage of Russia of medial

Permian age (4, 37, 38), where they are represented by *Platyoposaurus* spp. and *Bashkirosaurus cherdyncevi* (33).

Pangaea B as a Scenario for Faunal Dispersal. The global distribution of dinocephalians and other continental tetrapods in the medial Permian implies the existence of a barrier-free connection between Laurasia and Gondwana that allowed their migration across Pangaea. Two probable paths of dispersal around the Paleo-Tethyan Ocean need consideration: eastern Pangaea via the Cathaysian bridge (39) and western Pangaea around the central Pangaean mountains.

The Cathaysian continental fragments comprise small landmasses that include north China, Korea, south China, and Indochina (39, 40). These fragments were an archipelago that eventually formed a bridge and played an important role in therapsid dispersal during late Permian and early Triassic times (39). The Middle Permian Xidagou Formation, in the Ordos

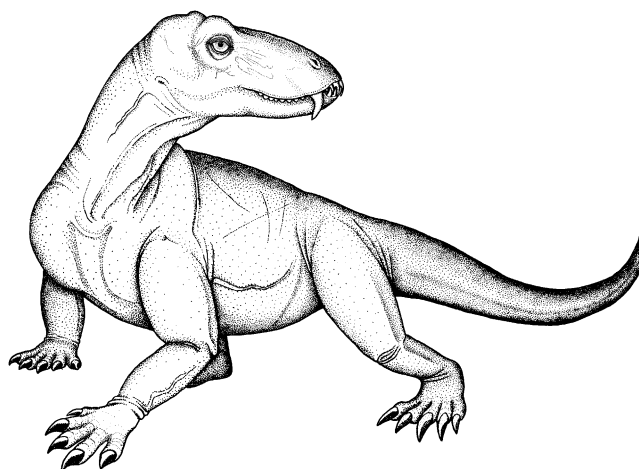


Fig. 4. Life reconstruction of the dinocephalian *P. biccai* from the Middle Permian of Brazil.

Basin of northern China, has produced a fauna that shows strong similarities to that from Russian deposits of the same age and indicates a link between this part of Cathaysia and Laurasia during the medial Permian (5, 41, 42). This faunal link is supported by firm geological connections (43). The presence of Oman paleofloras that share elements from Cathaysia, Gondwana, and Laurasia (44) could be interpreted as evidence for a connection between Gondwana (through the Arabian Peninsula) and Cathaysia during the medial Permian. However, there is no direct evidence that the Cathaysian bridge was complete at this time (39). Although these fragments, consisting of island arcs and continental platforms, could have allowed the dispersal of flora, still existent marine barriers would have made it very difficult, if not impossible, for both terrestrial and freshwater tetrapods to cross Cathaysia to reach South Africa from eastern Europe in the medial Permian (39).

A more feasible migration route was via western Pangaea. Currently, two models of Pangaeic reconstructions are debated: Pangaea A, which is similar to the classical Pangaea reconstructions, and Pangaea B, where South America is juxtaposed against the Appalachians until sometime in the early Triassic. In a Pangaea A reconstruction (39), the distance between the Russian Craton and southern Brazil was considerable, and the Appalachian/Mauritanian mountain ranges were important barriers. By contrast, in a Pangaea B configuration (Fig. 3), Brazil was not only closer to eastern Europe but the only mountain barrier along the way was the European Hercynides. Recent studies (39, 45, 46) indicate that right-lateral strike-slip motion during and after the Hercynian orogeny was much more significant than hitherto imagined, much more so in any case than initially proposed (47).

This right-lateral motion extended all of the way from the English Channel/Tornquist-Teisseyre Lineament in the north and northeast, to northwest Africa in the south and southwest (39, 46). The shear was distributed by a complex array of structures ranging from extensional basins and local structures of shortening to through-going strike-slip faults forming a very broad trans-tensional keirogen (a strike-slip system) (39, 47). Therefore, already in the early Permian the European Hercynides were much extended and large portions of them had subsided close to sea level in places such as the north German (or Lower Saxony) Basin (39). In the remaining areas, large rift basins had replaced the former mountains in which the Rotliegendes sedimentary rocks

had been laid down. In eastern Europe, these basins had subsided sufficiently to allow, in Zechstein time, a marine communication between the Paleo-Tethys and the Panthalassa in eastern Greenland and western Norway (39).

In the medial Permian it is possible that tetrapods migrated from Russia to Brazil and beyond to South Africa via eastern Europe and western Africa across the broad post-Hercynian keirogen and behind the Appalachian/Mauritanian orogenic belt (see the major red arrow in Fig. 3) because, in eastern Europe, the Hercynides no longer created a geographical barrier to their migration. This hypothesis could be tested by searching for tetrapod fossils or tetrapod ichnofossils in the poorly fossiliferous medial Permian deposits of eastern Europe, such as part of the Carapelit Formation in Romania or the Çakraz Formation in northwestern Turkey.

Conclusions

The dinocephalian *P. biccai* (Fig. 4) is a terrestrial carnivore from the Permian of South America, contributing to an ecologically more balanced picture of continental vertebrate communities during the late Paleozoic in western Gondwana. The anteosaurid provides further support for an early cosmopolitan distribution of tetrapods, and especially basal therapsid groups, already in the Guadalupian. Comparison of the tetrapod content of the Brazilian Middle Permian with that of other known Pangaeic faunas suggests a greater contribution from eastern Europe to the shaping of the terrestrial faunas in western Gondwana than previously recognized. A western Pangaeic route for tetrapod dispersal, in a Pangaea B scenario, is here favored against migration through the Cathaysian bridge. Tetrapods could have used the low Hercynides as a corridor for migration from eastern Europe to Brazil and, from there, to South Africa.

ACKNOWLEDGMENTS. We thank José Bicca for his kindness during our fieldwork on his property. We also acknowledge Liange Reck (Universidade Federal de Santa Maria) for discovering the type specimen, and Ana de Oliveira Bueno (UFRGS) for careful preparation of this fossil. We specially thank Christian Kammerer (American Museum of Natural History, New York) and Tom Kemp (Oxford University) for their constructive reviews. This research was funded by grants from Conselho Nacional de Desenvolvimento Científico e Tecnológico (Brazil) (to J.C.C. and C.L.S.); the National Research Foundation (South Africa) and Palaeontological Scientific Trust (South Africa) (to F.A., S.A.-G. and B.S.R.); and the Turkish Academy of Sciences (to A.M.C.Ş.).

- Kitching JW (1977) The distribution of the Karroo vertebrate fauna. *Mem Bernard Price Inst Palaeontol Res* 1:1–131.
- Rubidge BS (2005) 27th Du Toit Memorial Lecture—Re-uniting lost continents—Fossil reptiles from the ancient Karoo and their wanderlust. *S Afr J Geol* 108:135–172.
- Ivakhnenko MF, et al. (1997) Permian and Triassic tetrapods of eastern Europe. *Transactions of the Paleontological Institute* (GEOS, Moscow), 268:1–216 (Russian).
- Golubev VK (2000) The faunal assemblages of Permian terrestrial vertebrates from eastern Europe. *Paleontol J* 34:5211–5224.
- Li J (2001) The most primitive lower tetrapod fauna in China. *Sci China Ser D* 44:47–51.
- Simon SV, Sidor CA, Angielczyk KD, Smith RMH (2010) First record of a tapinocephalid (Therapsida: Dinocephalia) from the Ruhuhu Formation (Songea Group) of southern Tanzania. *J Vertebr Paleontol* 30:1289–1293.
- Reisz RR, Sues H-D (2000) *Evolution of Herbivory in Terrestrial Vertebrates*, ed Sues H-D (Cambridge Univ Press, Cambridge, UK), pp 9–41.
- Sennikov AG (1996) Evolution of the Permian and Triassic tetrapod communities of eastern Europe. *Palaeogeogr Palaeoclimatol Palaeoecol* 120:331–351.
- Kemp T (2005) *The Origin and Evolution of Mammals* (Oxford Univ Press, Oxford).
- Barberena MC, Daemon RF (1974) First occurrence of Amphibia (Labyrinthodontia) in the Rio do Rasto Formation; geochronological and stratigraphical implications. *28° Congresso Brasileiro de Geologia, São Paulo, Brazil, Anais* 2:251–261 (Portuguese).
- Barberena MC, Araújo DC (1975) Fossil tetrapods from South America and continental drift. *Congreso Argentino de Paleontología y Bioestratigrafía 1, Tucumán, Actas* 1: 497–504 (Spanish).
- Barberena MC, Araújo DC, Lavina EL (1985) Late Permian and Triassic tetrapods of southern Brazil. *Natl Geogr Res* 1:5–20.
- Smith RMH, Keyser A (1995a) in *Biostratigraphy of the Beaufort Group (Karoo Supergroup)*, ed Rubidge B (South African Committee for Stratigraphy). *Biostratigraph Ser* 1:13–17.
- Smith RMH, Keyser A (1995b) in *Biostratigraphy of the Beaufort Group (Karoo Supergroup)*, ed Rubidge B (South African Committee for Stratigraphy). *Biostratigraph Ser* 1:18–22.
- Smith RMH, Keyser A (1995c) in *Biostratigraphy of the Beaufort Group (Karoo Supergroup)*, ed Rubidge B (South African Committee for Stratigraphy). *Biostratigraph Ser* 1:23–28.
- Langer MC (2000) The first record of dinocephalians in South America: Late Permian (Rio do Rasto Formation) of the Paraná Basin, Brazil. *N Jb Geol Paläont Abh* 215: 69–95.
- Cisneros JC, Abdala F, Malabarba MC (2005) Pareiasaurids from the Rio do Rasto Formation, southern Brazil: Biostratigraphic implications for Permian faunas of the Paraná Basin. *Rev Bras Paleontol* 8:13–24.
- Kammerer CF (2010) Systematics of the Anteosauria (Therapsida: Dinocephalia). *J Syst Palaeontology* 9:261–304.
- Goloboff P, Farris J, Nixon K (2003) TNT: Tree Analysis Using New Technology, Version 1.1. Available at www.zmuc.dk/public/phylogeny/TNT.
- Rubidge BS (1991) A new primitive dinocephalian mammal-like reptile from the Permian of southern Africa. *Palaeontology* 34:547–559.
- Sidor CA, Wellman J (2003) A second specimen of *Lemurosaurus pricei* (Therapsida: Burnetiamorpha). *J Vertebr Paleontol* 23:631–642.
- Sidor CA, Smith RMH (2007) A second burnetiamorph therapsid from the Permian Teekloof Formation of South Africa and its associated fauna. *J Vertebr Paleontol* 27: 420–430.
- Fröbisch J, Reisz RR (2011) The postcranial anatomy of *Suminia getmanovi* (Synapsida: Anomodontia), the earliest known arboreal tetrapod. *Zool J Linn Soc Lond* 162: 661–698.
- Liu J, Rubidge BS, Li J (2010) A new specimen of *Biseridens qilianicus* indicates its phylogenetic position as the most basal anomodont. *Proc Biol Sci* 277:285–292.
- Modesto S, Rubidge B, Welman J (1999) The most basal anomodont therapsid and the primacy of Gondwana in the evolution of the anomodonts. *Proc Biol Sci* 266:331–337.

26. Cisneros JC, Abdala F, Rubidge BS, Dentzien-Dias PC, de Oliveira Bueno A (2011) Dental occlusion in a 260-million-year-old therapsid with saber canines from the Permian of Brazil. *Science* 331:1603–1605.
27. Botha-Brink J, Modesto SP (2009) Anatomy and relationships of the Middle Permian varanopid *Heleosaurus scholtzi* based on a social aggregation from the Karoo Basin of South Africa. *J Vertebr Paleontol* 29:389–400.
28. Anderson JS, Reisz RR (2004) *Pyozia mesenensis*, a new, small varanopid (Synapsida, Eupelycosauria) from Russia: “Pelycosaur” diversity in the Middle Permian. *J Vertebr Paleontol* 24:173–179.
29. Cisneros JC, Tsuji LA (2009) Nycteroleter affinities of a Permian parareptile from the South African Karoo Basin. *Acta Palaeontol Pol* 54:165–169.
30. Reisz RR, Laurin M (2001) The reptile *Macroleter*: First vertebrate evidence for correlation of Upper Permian continental strata of North America and Russia. *Geol Soc Am Bull* 113:1229–1233.
31. Reisz RR, Laurin M (2002) Reply. *Geol Soc Am Bull* 114:1176–1177.
32. Lucas SG (2002) The reptile *Macroleter*: First vertebrate evidence for correlation of Upper Permian continental strata of North America and Russia. *Geol Soc Am Bull* 114: 1174–1175.
33. Schoch RR, Milner AR (2000) in *Handbook of Paleoherpertology*, Part 3B, ed Wellnhofer P (Dr. Friedrich Pfeil, Munich) (German).
34. Dias EV, Barberena MC (2001) A temnospondyl amphibian from the Rio do Rasto Formation, Upper Permian of southern Brazil. *An Acad Bras Cienc* 73:135–143.
35. Cox CB, Hutchinson P (1991) Fishes and amphibians from the Late Permian Pedra do Fogo Formation of Brazil. *Palaeontology* 34:561–673.
36. Goes AMO, Feijó JF (1994) Bacia do Parnaíba [The Parnaíba Basin]. *Boletim de Geociências da PETROBRAS* 8:57–67 Portuguese.
37. Golubev VK (2005) in *The Nonmarine Permian*, eds Lucas SG, Zeigler KE, *NM Mus Nat Hist Sci Bull* 30:95–99.
38. Lucas SG (2005) A global hiatus in the Middle Permian tetrapod fossil record. *Stratigraphy* 1:47–64.
39. Şengör AMC, Atayman S (2009) The Permian extinction and the Thethys: An exercise in global geology. *Geol Soc Am, Spec Paper* 448.
40. Lucas SG (2006) Global Permian tetrapod biostratigraphy and biochronology. *Non-Marine Permian Biostratigraphy and Biochronology*, eds Lucas SG, Cassinis G, Schneider JW. *Geol Soc Lond, Spec Publ* 265:65–93.
41. Müller J, Li JL, Reisz RR (2008) A new bolosaurid parareptile, *Belebey chengi* sp. nov., from the Middle Permian of China and its paleogeographic significance. *Naturwissenschaften* 95:1169–1174.
42. Reisz RR, Liu J, Li J-L, Müller J (2011) A new captorhinid reptile, *Gansurhinus qingtoushanensis*, gen. et sp. nov., from the Permian of China. *Naturwissenschaften* 98: 435–441.
43. Şengör AMC, Natal’in BA (1996) Turkic-type orogeny and its role in the making of the continental crust. *Annu Rev Earth Planet Sci* 24:263–338.
44. Berthelin M, et al. (2003) The Oman Gharif mixed paleoflora: A useful tool for testing Permian Pangea reconstructions. *Palaeogeogr Palaeoclimatol Palaeoecol* 196:85–98.
45. Franke W (2000) The mid-European segment of the Variscides: Tectonostratigraphic units, terrane boundaries and plate tectonic evolution. *Orogenic Processes: Quantification and Modelling in the Variscan Belt*, eds Franke W, Haak V, Oncken O, Tanner D. *Geol Soc Lond, Spec Publ* 179:35–61.
46. Rossi P, Guillot S, Ménot RP (2008) La branche varisque méridionale [The southern Variscan branch]. *Géochronique* 105:45–49 French.
47. Arthaud F, Matte P (1977) Late Paleozoic strike-slip faulting in southern Europe and northern Africa: Result of a right-lateral shear zone between the Appalachians and the Urals. *Geol Soc Am Bull* 88:1305–1320.
48. Morel P, Irving E (1981) Paleomagnetism and the evolution of Pangea. *J Geophys Res* 86:1858–1872.